

SPACE RENTAL

HANGAR, CENTRE FOR ARTISTIC RESERACH AND PRODUCTION

Hangar is located in the Can Ricart complex, an industrial area in the Poblenou district of Barcelona that dates back to the mid-19th century and was designed for the textile industry. The building occupied by Hangar was used by various companies until the industrial activities of the building ceased in 1991.

Currently, and after the extension of the centre of the adjoining facilities, the Hangar buildings occupy a combined surface area of 2,600 m² distributed in 4 buildings, including two spaces and an annexe that are rented to artists, projects and cultural productions according to availability:

RICSON ROOM / POLVALENTE ROOM



RICSON ROOM

LARGE OPEN SPACE, SOUNDPROOFED,
ISOLATED FROM THE DRESSING
ROOMS, WC AND PRODUCTION AREAS.



Maximum capacity: 80 pax

Surface area: 310 m² total

Ground floor: 230 m² / Upper floor: 25 m²

Height: 8 mt

Colour: black

Natural light: no

Maximum power: 60 KW

Price of electricity: 0.50 per KW + VAT

Heating: yes

A/C: yes

Wifi: yes

Toilets: yes

Dressing rooms: yes. Room equipped with mirrors, wardrobe, showers and toilets.

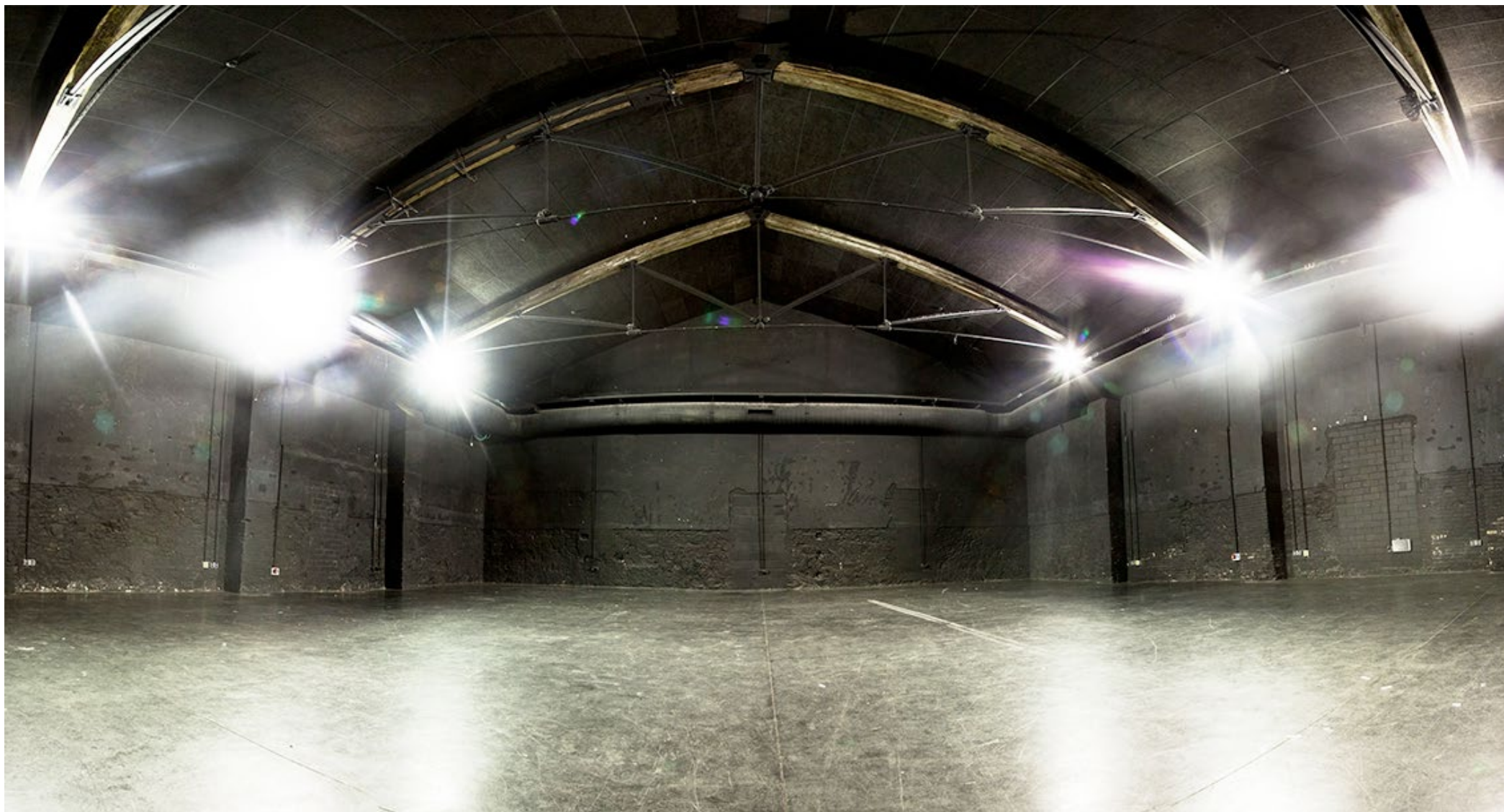
Access: Emilia Coranty Street

Parking: loading and unloading

Loading and unloading area inside: 2 mt

Uses

- Shooting
- Rehearsals
- Installation tests
- Projection and sound
- Photo / video shoots
- Meetings



Ricson Room - Panoramic view ground floor



Ricson Room - Access Emilia Coranty



Ricson Room - Ground floor



Ricson Room - View of control room and production room



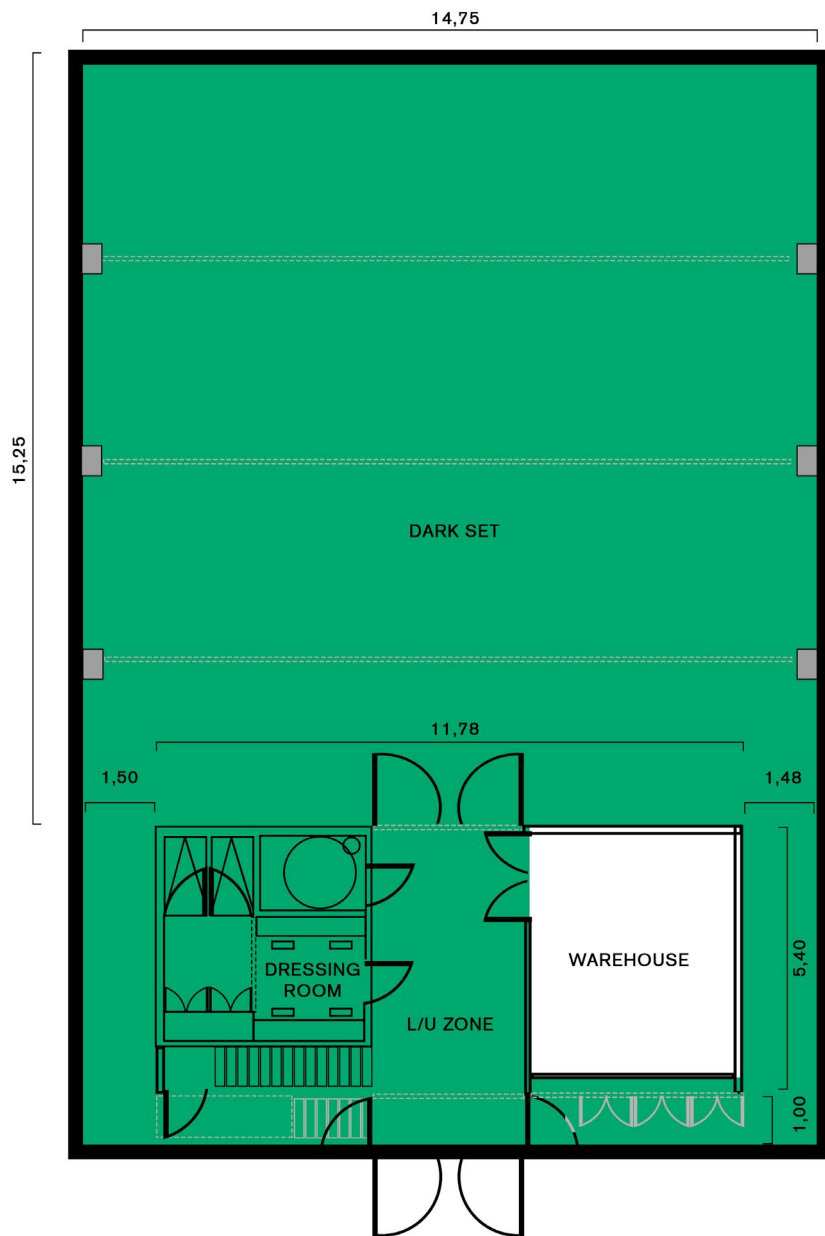
Ricson Room - Production room. First floor



Ricson Room - Dressing rooms

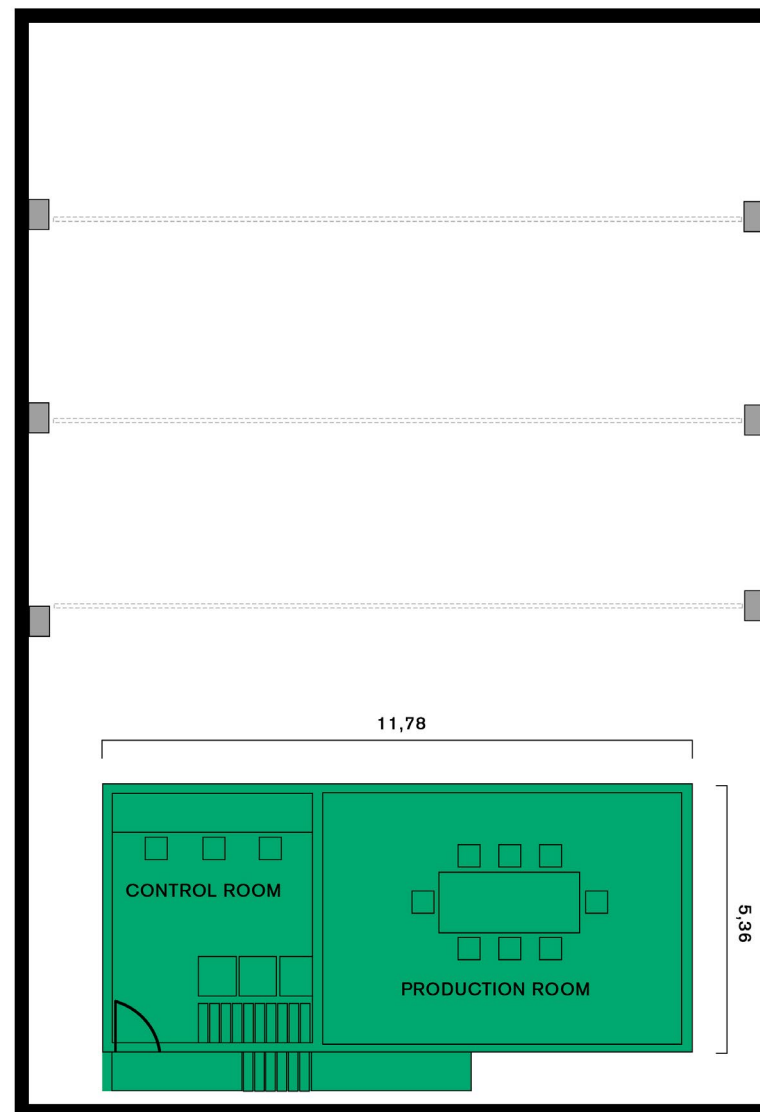


Ricson Room - First floor access



RICSON ROOM - GROUND FLOOR

Ricson Room - Ground floor



RICSON ROOM - UPPER ROOM

Ricson Room - First floor

POLIVALENTE ROOM

LARGE ROOM WITH LARGE WINDOWS
DIVIDED BY COLUMNS



Uses

- Shooting
- Rehearsals
- Assembly of large-format sculptures and installations
- Installation tests
- Projection and sound
- Photo / video shoots
- Meetings

Maximum capacity: 40 pax

Surface area: 200 m²

Colour: white

Daylight: yes (can be dimmed)

Incl. power consumption: 3 KW

Heating: yes

A/C: no

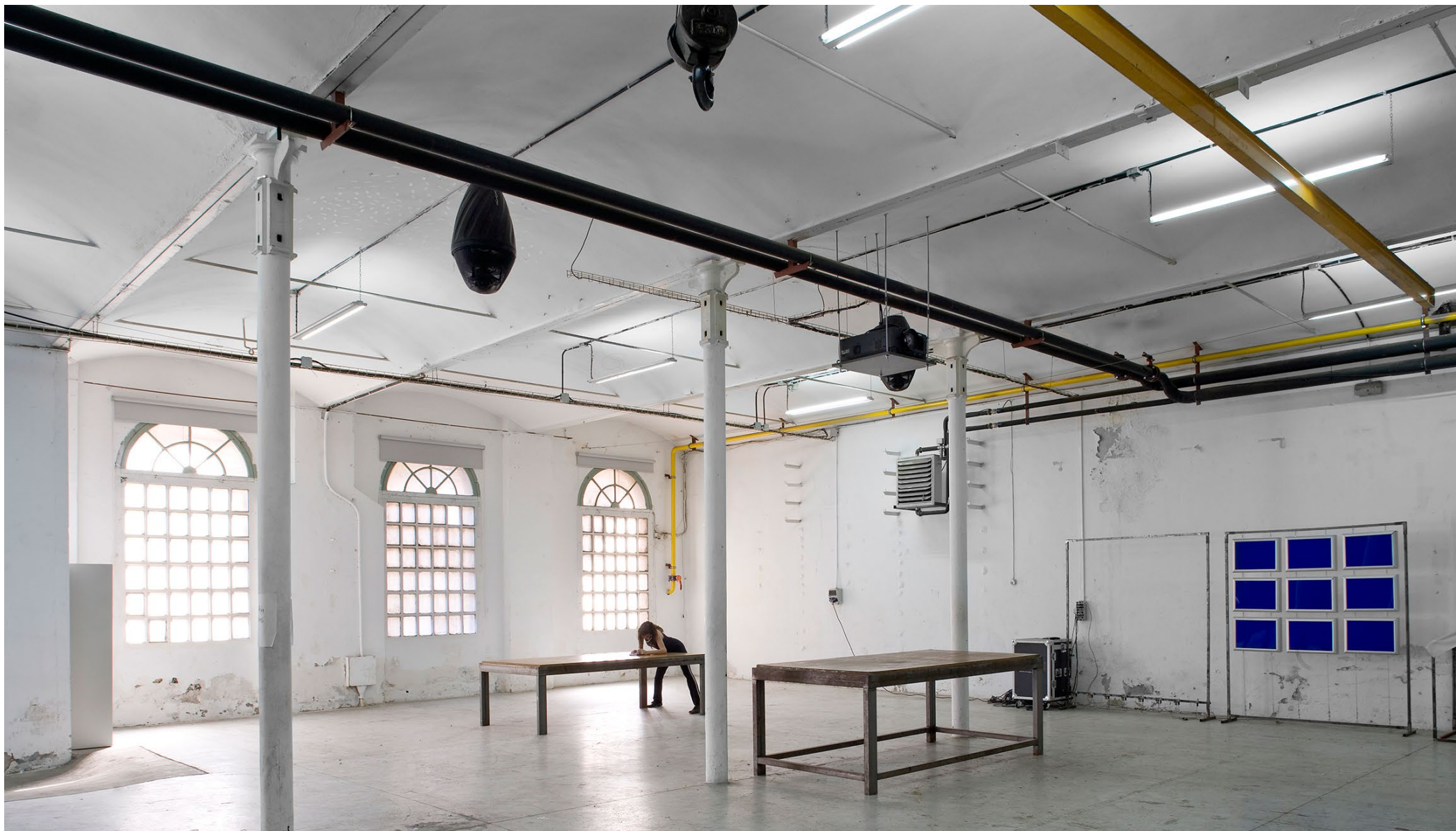
Toilet: yes

Dressing rooms: no

Backstage: see *Former Offices*

Access: Emilia Coranty Street

Parking: loading and unloading



Sala Polivalente -General view



Polivalente Room - General view



Polivalente Room - Interior



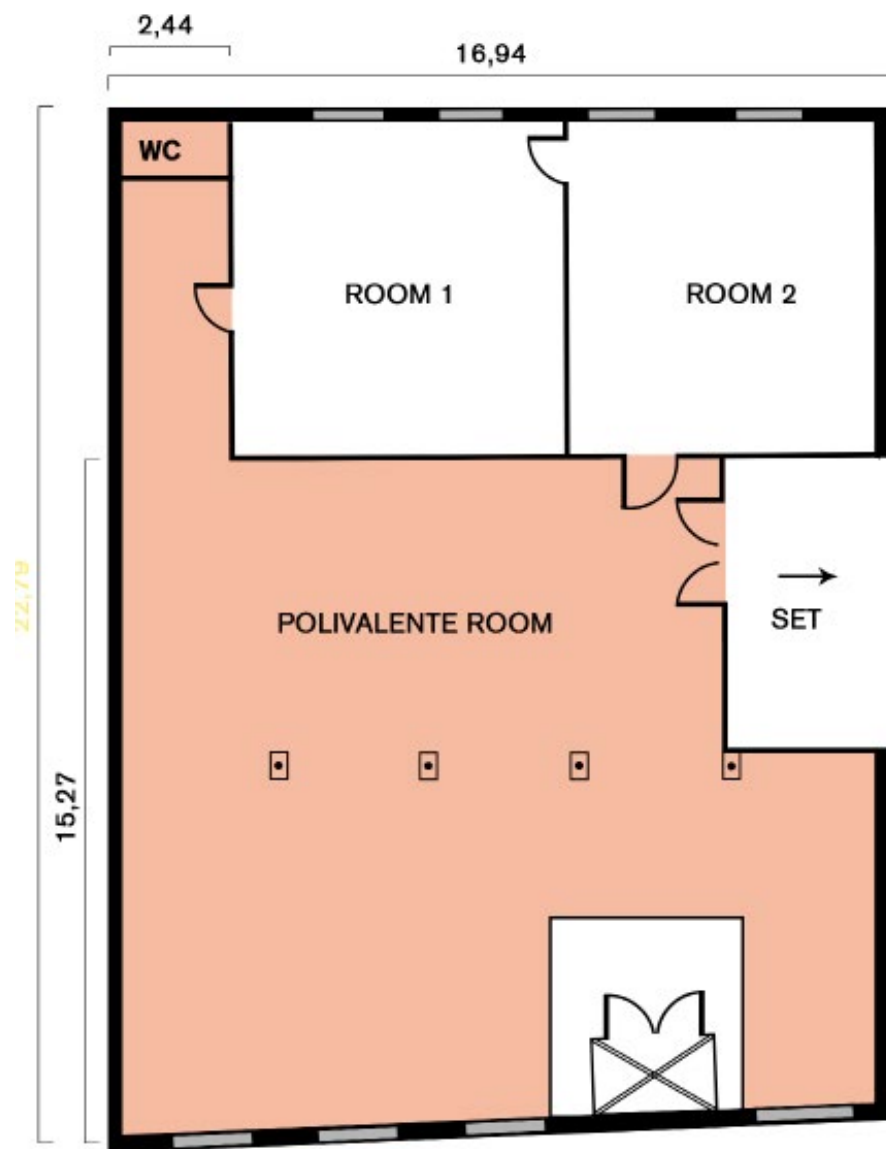
Polivalente Room - Interior



Polivalente Room - Acces Emilia Coranty

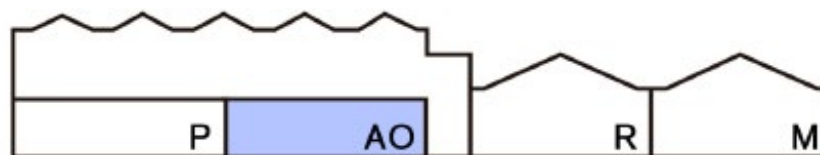


Polivalente Room - Interior



FORMER OFFICES (EXTENSION TO POLIVALENTE ROOM

OPEN SPACE WITH LARGE WINDOWS



Maximum capacity: 30 pax
Surface area: 100 m²
Height: 4,5 mt
Colour: white
Natural light: yes (can be dimmed)
Incl. power consumption: 3 KW
Heating: yes
A/C: no
Toilet: yes
Dressing rooms: no

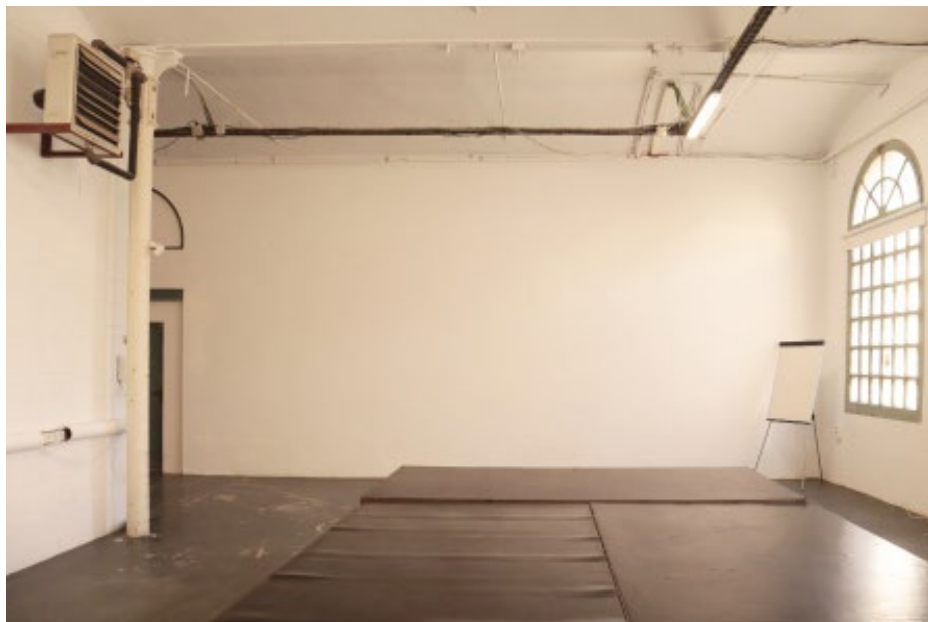
Uses

— *Backstage Polivalente Room*

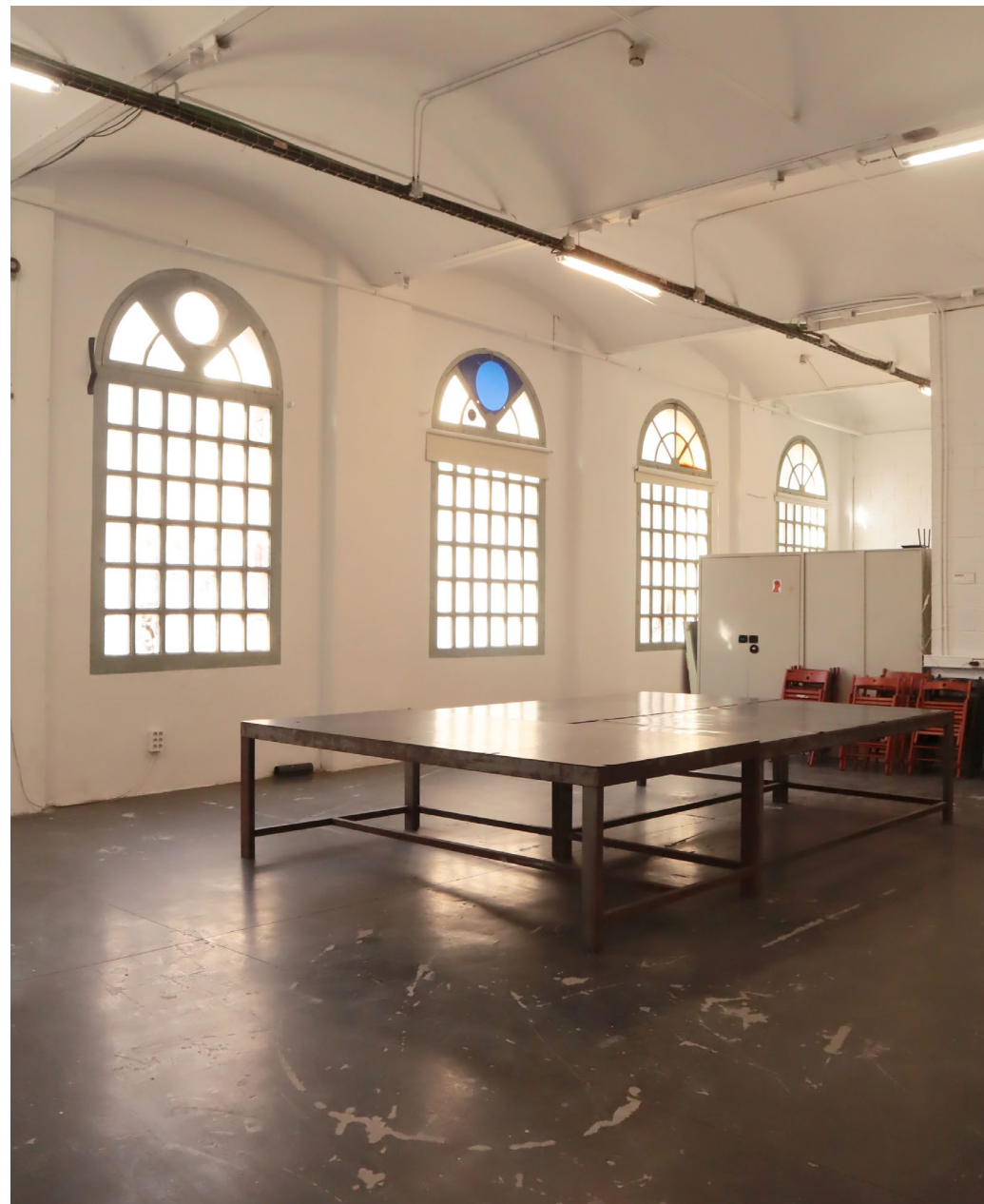
Access: Emilia Coranty Street
Parking: loading and unloading



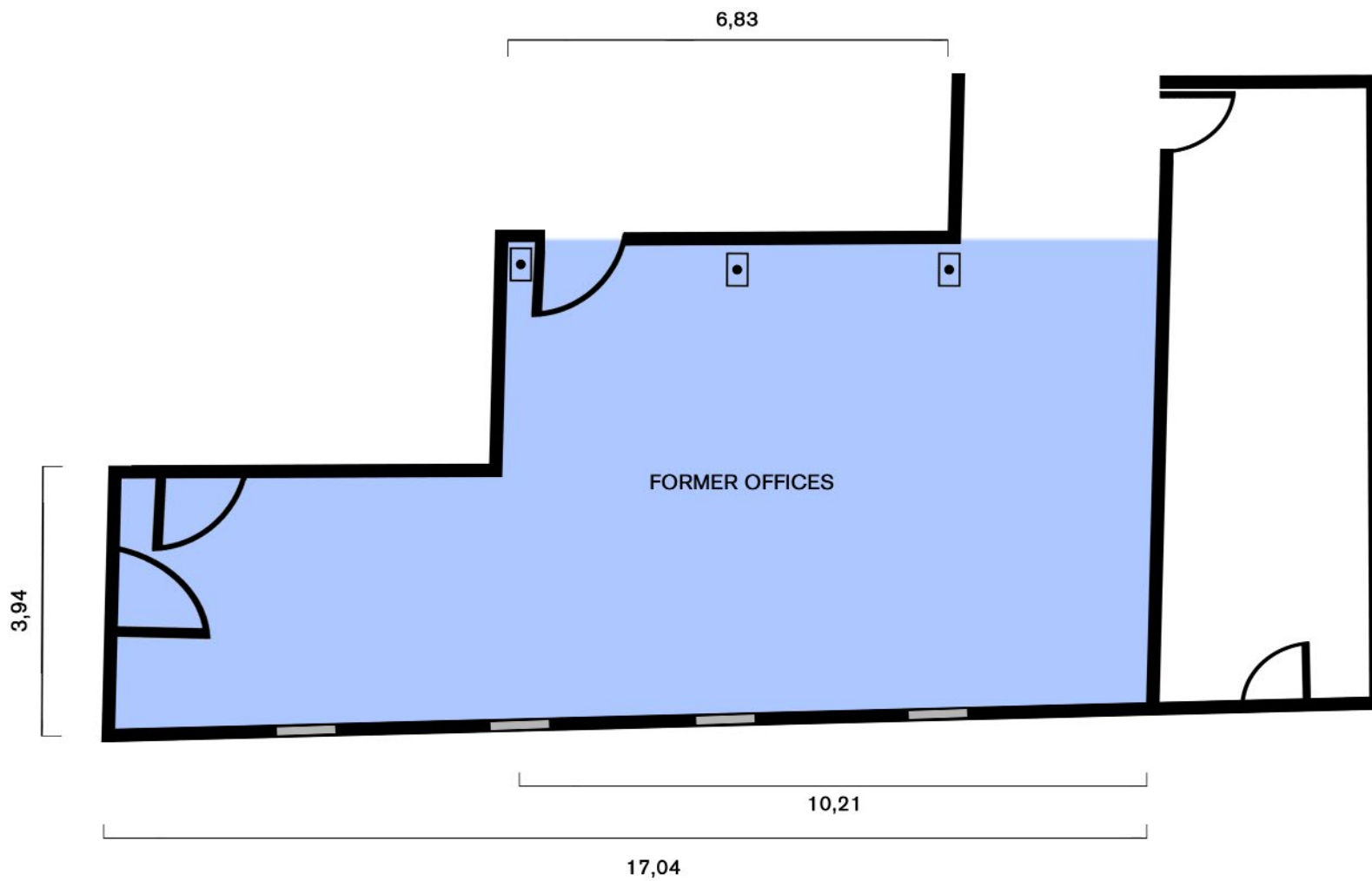
Former offices



Former offices



Former offices



RATES AND SERVICES

DAILY RENTALS

RICSON ROOM 650 € + IVA

POLIVALENTE ROOM 400 € + IVA

POLIVALENTE ROOM + FORMER OFFICES 600 € + IVA

SERVICES

— PRODUCTION LAB: integral production of projects, construction of scenographies and materials laboratory.

— SOFTWARE/HARDWARE AND INTERACTION LAB: development of applications including real-time interaction, synchronisations, mechanisms and remote controls. Programming and construction of prototypes.

— EQUIPMENT: Audio and video editing and post-production room and equipment rental.

FOR FURTHER INFORMATION:

Esther Doblàs
espais@hangar.org
93 308 4041
www.hangar.org

